

# Company Profile



ARCELOR MITTAL VENDOR CODE  
10001999



SEC Vendor Code  
5021436



SABIC VENDOR  
CODE  
11053150



Vendor Code  
10014103



# SSC

**SAID AL-SHARQ CONTRACTING COMPANY**



# Wide-ranging Contracting Solutions

---

Welcome to Said Al Sharq Contracting Company (SSC), your trusted partner for delivering high-quality contracting services across various sectors. With extensive experience and a commitment to excellence, SSC is your go-to source for industrial and civil solutions. We operate a fabrication shop and machine shop in Khobar Aziziyah, housed in a fully equipped facility, and maintain an additional facility and office in the Jubail Light Industrial Area.



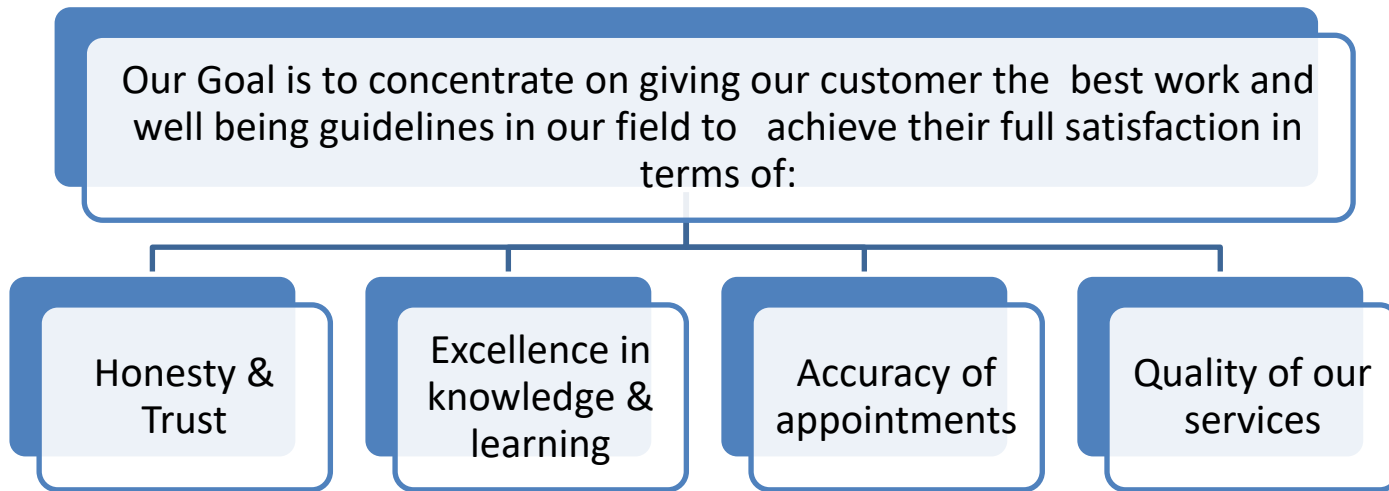
## MISSION

Our mission is to become the top contracting and technical solutions company in the GCC, recognized as a trusted partner by our clients in KSA. We strive to be an essential part of their success, leveraging our expertise, skills, and resources to meet the challenges of the contracting industry. By anticipating their needs and consistently fulfilling our commitments, we aim to build lasting relationships based on trust and excellence

## VALUES

We strive for greatness in everything we do through a foundation of honesty, delivering top-quality work, and continuously improving our focus on customer needs, this drives us to be accountable, collaborate effectively, and prioritize safety and sustainability throughout our work.

## VISION



# Our Services Overview

## Comprehensive services for diverse needs

### ➤ **Civil Works:**

Construction works, Building maintenance, Right of way, Earthworks, Excavation, Backfilling works.

### ➤ **Mechanical Works:**

Piping, structural installation, and fabrication works, Welding

### ➤ **Electrical Works:**

Installation and maintenance involving 10V systems.

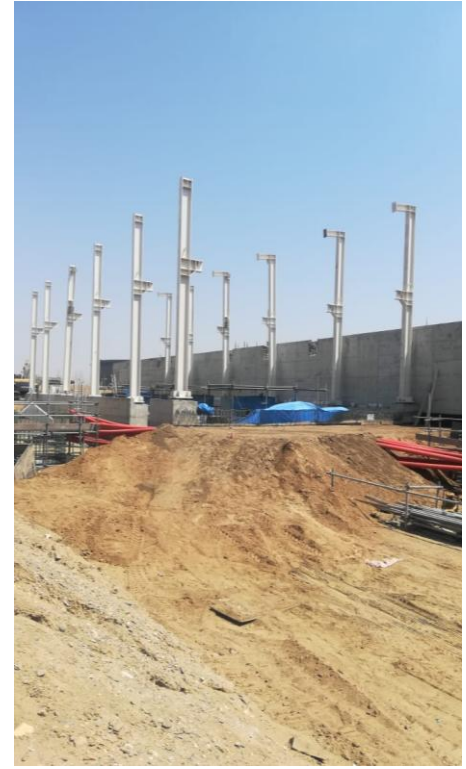
### ➤ **Valve & Pump Services:**

Expert installation and refurbishment, Valve Testing Facility

### ➤ **Machining Services:**

Precision machining, including CNC capabilities





## Civil Construction work

- Our civil and MEP services cover a wide range of projects, from simple constructions to complex installations, all performed with unmatched expertise and quality.



## **Right of way, Earthworks, Excavation, Backfilling works.**

- SSC specializes in underground utilities, site grading, structural excavation, demolition, and concrete works including mobile crushing and flatwork paving. With 11 years of experience, SSC is committed to delivering high-quality, value-engineered solutions with integrity. We ensure exceptional service from start to finish, maintaining competitive pricing without compromising on quality. Our extensive portfolio, highlighted on our reference page, reassures new clients of our consistent delivery and professional service, establishing SSC as the preferred partner for future infrastructure projects.

# Maintenance and Renovation Services

- Our maintenance and renovation services ensure that all facilities and infrastructure are kept in top condition, from routine maintenance to full-scale renovations.



# Mechanical Works

We strive to be the leading industrial service provider, committed to excellence and integrity. Our goal is to deliver unmatched service quality and foster trust, thereby setting industry benchmarks. We are dedicated to continuous improvement in our operations, elevating quality standards, and empowering our team. At SSC, exceeding client expectations is not just an objective; it's our promise.

## **Mechanical Works:**

**Piping:** Specialized in the installation and maintenance of systems for the efficient transport of fluids and gases.

**Structural Installation and Fabrication:** Expertise in constructing and assembling robust frameworks and structures tailored to industrial needs.

**Welding:** Advanced skills in fusing materials to form strong, durable joints critical to industrial infrastructure.



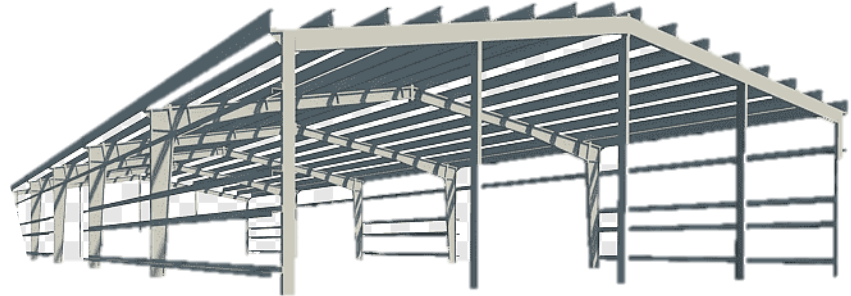
# Fabrication and Welding Expertise

- SCC excels in providing top-quality fabrication and welding services, utilizing advanced techniques and materials to meet diverse industrial needs.



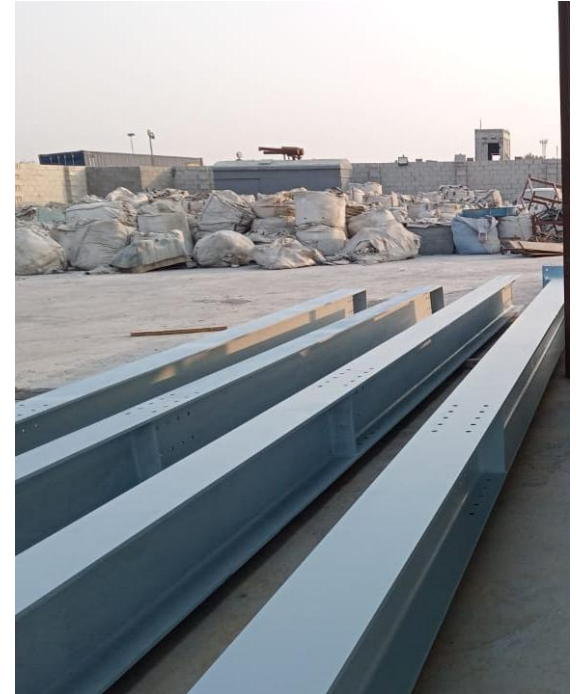
# ENGINEERING, FABRICATION & INSTALLATION OF STEEL STRUCTURES

- **Design:** Structural analysis, CAD drawings, material selection.
- **Engineering:** Detailed drawings, compliance with codes, cross-discipline coordination.
- **Fabrication:** Cutting, welding, quality checks in workshop.
- **Installation:** Alignment and securing of structural elements, securing components.
- **Erection:** Final assembly, post-installation inspection.
- Sand Blasting & Painting of Steel structures (On site & In-house Services)

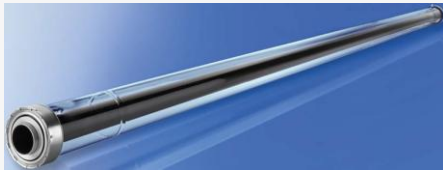


# Welding & Fabrication Work

- We have full service heavy industry facility as manufacturing workshop in Jubail which is facilitated with Automatic & Semi Automatic Welding Machines, Bending & Folding Machines, Hydraulic Press, Mechanical Cutting Machines, Gas Cutting Machines, CNC Profile Machine, Band Saw, Hack Saw, Alignment Bed, Punching Machine, Shearing Machine, Sand Blasting & Painting Shop.







---

## HCE Tube Welding & Replacement

- In the Solar industry, **HCE** refers to **Heat Collector Elements**. These are crucial components in **Concentrated Solar Power (CSP)** systems, particularly in **parabolic trough collectors**. HCEs are the tubes that absorb and transfer the concentrated solar energy to a heat transfer fluid (HTF), which is then used to generate electricity. The tubes are typically coated with a material designed to maximize solar absorption while minimizing heat loss. HCEs are key for improving the efficiency of CSP systems.

# Electrical Works

## **SSC Electrical Services: 10V Systems**

### **Installation & Maintenance:**

Specializing in precise installation and maintenance of 10V systems.

Focused on reliability and efficiency to enhance system performance.

### **Commitment:**

Committed to delivering innovative and sustainable solutions.

Striving for excellence and surpassing client expectations with each project.



# Electrical Work

Services available for process plants including power, water, solar, cement, oil and gas, textile plants, and more:

Preventive maintenance (PM) as per OEM recommendations (IEEE & IEC).

Predictive maintenance using the latest equipment (IEEE & IEC).

Corrective maintenance completed in minimal time.

Services for transformers, switchgear (SWGR), synchronization, high-speed bus transfer (HSBT), excitation, and more.





Our company provides a comprehensive range of professional valve services, including inspection, testing, repair, calibration, installation, and maintenance, ensuring reliable and efficient operation. The organization's primary objective is to deliver cost-effective valve refurbishment services while meeting customer expectations for quality and on-time delivery. Sisco Services is primarily focused on serving the Oil and Gas, Petrochemical, and Power sectors.

# Valve Services

---

Inspection & Testing

---

Repair & Modification

---

Mobile Repair Facility

---

Online Services

---

Valve Testing & Calibration

---

On-Site repair and Maintenance

---

Modifications, Extensions & Installations

---

Replacement & Technical Support

---

Reinstallation & Diagnostics

# Motor & Pump Services

We repair and service all kinds of fuel pumps of brands such as Bosch, MAN, B&W, Nigata, Wartsila, yammer, Mak, Cummins, Cat & Delphi we are well known for our quality service especially at repairing and servicing fuel pumps

---

Pump repair & Services

---

Submersible Pump

---

Pump & Pump Set Site Installation

---

Fabrication & Assembly of Pump

---

High pressure pump

---

Stormwater Over Pumping

---

Dredge & Slurry Pumps

---

Three Phases High Voltage Electric Motors

---

Slip Ring Electric Motors

---

Explosion Proof High Voltage ATEX Certified

---

Explosion Proof Low Voltage Electric Motor

---

IEC Standard Three Phases Low Voltage Electric Motors

---

Super Premium Efficiency IE4

---

Synchronous Servo Motors

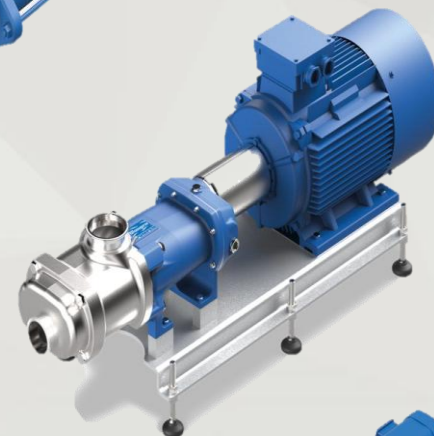
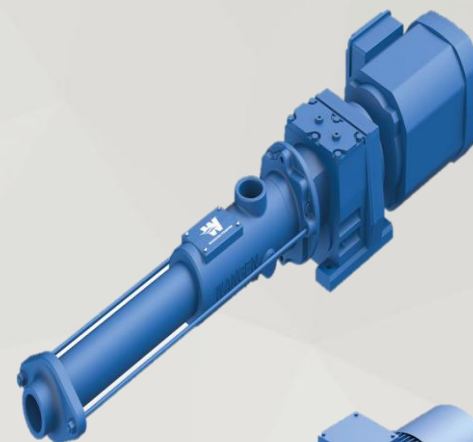
---

Smoke Extraction Motors

---

IC01 High Voltage Series

---



# Machining Capabilities

---

- Our state-of-the-art machine shop is equipped with the latest CNC lathes and machining equipment, enabling us to deliver high precision and custom machining services.







# Machining

---





# Machining





# Our Facility

---



# Our Facility

---



# Commitment to Quality and Safety

- At SCC, we adhere to the highest standards of quality and safety, with rigorous protocols and certifications in place to ensure excellence in every project.



# Our Clients





# Our Portfolio

Discover our portfolio of projects, which showcases our capabilities and the trust that major clients place in our services.





# Our Portfolio



# Contact and Next Steps

E-mail: [info@ssco-sa.com](mailto:info@ssco-sa.com) [www.scco-sa.com](http://www.scco-sa.com)

Tel: 011-2321110 +966 50 4649333 +966 59 4688213

- For more information or to schedule a consultation, please contact us. We are eager to discuss how we can assist you with your project needs.



# Thank You

- Thank you for considering Said Al Sharq Contracting Company for your contracting needs. We look forward to the opportunity to collaborate and achieve outstanding results.